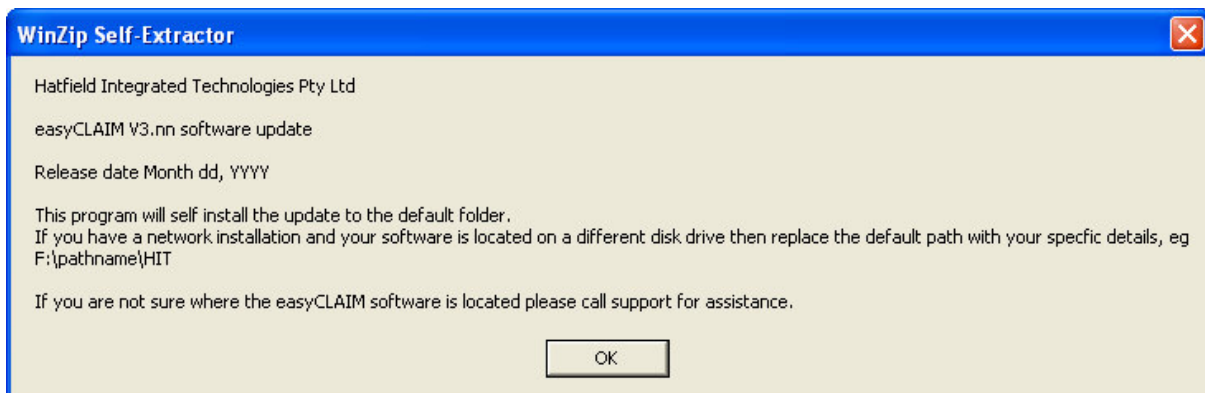




**NOTE: This update is for the PVX V10 version of easyOSHC
Do NOT apply this update to Version 9.xx**

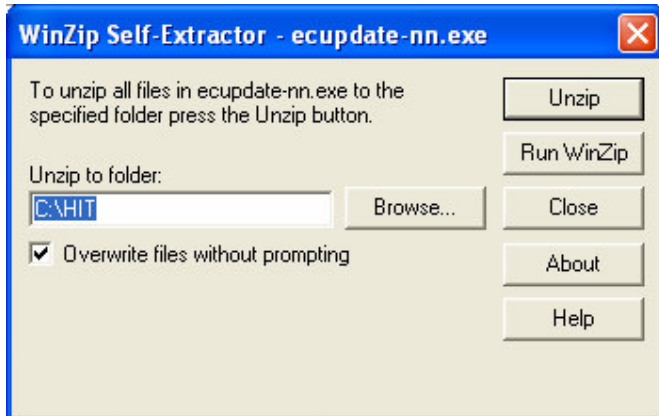
Installing the Update:

1. Close any other programs you are running before attempting to the install easyOSHC update
2. Insert the disk labelled “easyOSHC Update v10.11”
3. From the start menu select run
4. If you received a floppy disk, type “a:\UPD1011PVX.exe” (where a: is the letter of your floppy disk drive)
OR
If you received a CD, type “d:\UPD1011PVX.exe” (where d: is the letter of your CDROM drive)
OR
If you received the update by email ‘save as’ the UPD1011PVX.zip attachment to a temporary folder and unzip or extract the embedded UPD1011PVX.exe self install file. Then click on the UPD1011PVX.exe file.
5. Press Enter



Click OK to begin the update install

Click Unzip to install the update files



6. When the update has finished you should see an "Update Successful" message
7. Click Ok
8. Start the easyOSHC program in the same way as normal.

Version 10.11: Fixes and improvements

1. Updated the version number to 10.11
2. Includes Update 10.10
3. Includes a modified CCB Rate Maintenance program.

Things to do after installing this update

There have been some isolated reports that the CCB rate file is not displaying properly. This update fixes that problem.

Navigate to the File Maintenance Menu and start "Maintain Rebatable Fees"

At the "Use PRE-SET FIELD NUMBERS (Y/N) prompt - Press <ENTER>

```
CHZA60 MAINTAIN REBATABLE FEE          FANTASTIC AFTER SCHOOL CARE    15/10/2007
EFFECTIVE DATE 02/07/2007

1. CCB RATE PER HOUR :
2. SCHOOL PERCENTAGE :
3. JFA CONTRIBUTION  :

ENTER EFFECTIVE DATE, <F2>=NEXT, <F1>=LOOKUP, OR <F4> TO EXIT
```

At the above screen press and hold down the <F2> key. This will cause the CCB rates records to scroll through on the screen.

When this stops press <ENTER> at the 02/07/2007 record and inspect field 3 and make sure it looks the same as the screen below.

```
CHZA60 MAINTAIN REBATABLE FEE          FANTASTIC AFTER SCHOOL CARE    15/10/2007
EFFECTIVE DATE 02/07/2007

1. CCB RATE PER HOUR : 3.37
2. SCHOOL PERCENTAGE :85.00
3. JFA CONTRIBUTION   : 0.10

ENTER FIELD NO, <H>=HARDCOPY, <DELETE>, <ENTER>=CORRECT, <F4>=NO CHANGE
```

Press <ENTER> to save your changes.

Finished!