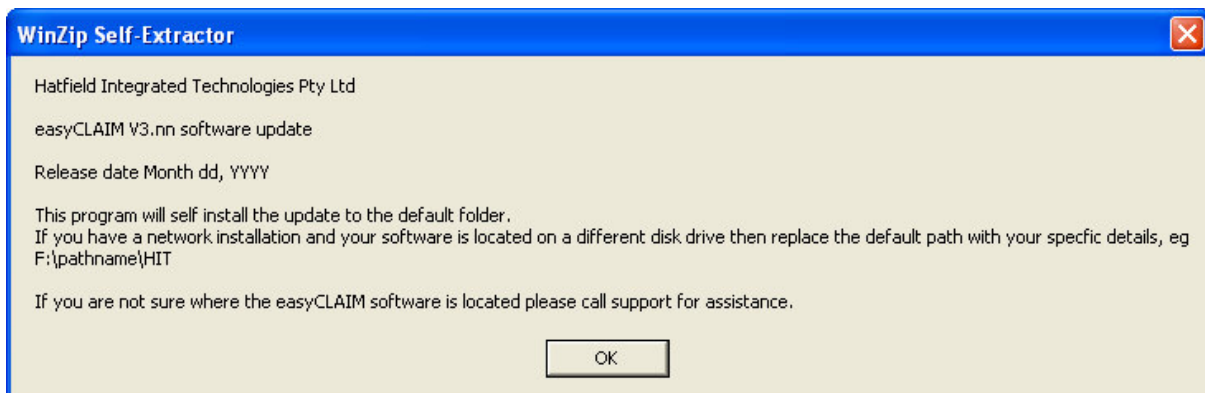




**NOTE: This update is for the PVX V10 version of easyOSHC
Do NOT apply this update to Version 9.xx**

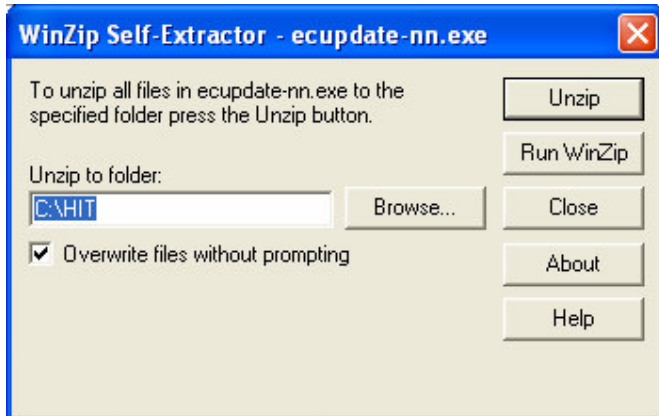
Installing the Update:

1. Close any other programs you are running before attempting to the install easyOSHC update
2. Insert the disk labelled “easyOSHC Update v10.09”
3. From the start menu select run
4. If you received a floppy disk, type “a:\UPD1009PVX.exe” (where a: is the letter of your floppy disk drive)
OR
If you received a CD, type “d:\UPD1009PVX.exe” (where d: is the letter of your CDROM drive)
OR
If you received the update by email ‘save as’ the UPD1009PVX.zip attachment to a temporary folder and unzip or extract the embedded UPD1009PVX.exe self install file. Then click on the UPD1009PVX.exe file.
5. Press Enter



Click OK to begin the update install

Click Unzip to install the update files



6. When the update has finished you should see an "Update Successful" message
7. Click Ok
8. Start the easyOSHC program in the same way as normal.

Version 10.09: Fixes and improvements

1. Updated the version number to 10.09
2. Includes Update 10.08
3. New PAYG Withholding tables for July 01, 2007.

Things to do after installing this update

1. Install the PAYG tables. Navigate to the Payroll menu and select item 14.
2. Add the new CCB rates. Navigate to the File Maintenance menu and select item 21.

Effective Date : 02/07/2007

CCB Rate Per Hour :3.37

School Percentage :85.00

JFA Contribution :0.10